



Low Volume Control Zone Kits

high flow and
low flow zones

APPLICATIONS

- Designed for all dripperline, drip and micro-spray zones
- For zones between 0.25 and 17.6 GPM

SPECIFICATIONS

- Low Flow Regulator
Flow range: 0.25 - 4.4 GPM
Regulated pressure: 42 psi
- High Flow Regulator
Flow range: 4.5 - 17.6 GPM
Regulated pressure: 45 psi
Maximum pressure rating: 145 psi
- Filter
Mesh: 140
Flow range: 0 - 17 GPM
Maximum pressure rating: 140 psi
- Valve
Low flow range: 0.1 to 30 GPM
Maximum pressure rating: 150 psi
- Solenoid
24VAC, 370mA inrush current,
190mA holding current, 60 cycles

FEATURES & BENEFITS

Valve, filter and pressure regulator completely assembled

Saving installation and labor costs.

Compact design

Fits into standard rectangular valve box.

Wide range of flow rates

For a variety of applications.

Proven disc filter design

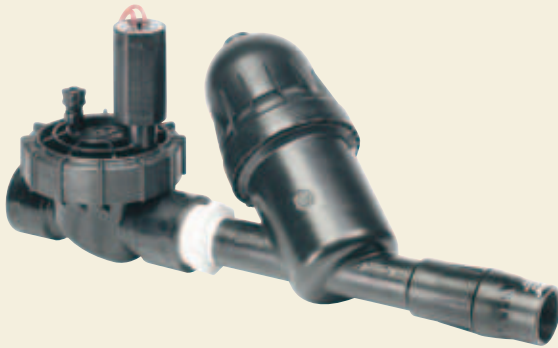
Provides 25 square inches of filtering surface.

Pre-assembled valve, filter and pressure regulator in one convenient kit

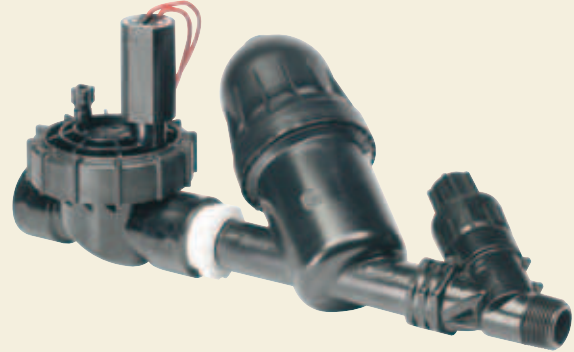
Low Volume Control Zone Kit Ordering Information

Description	Model Number	Item Number
Low Flow, Low Volume Control Zone Kit	LVCZ10075-LF	76601-005320
High Flow, Low Volume Control Zone Kit	LVCZ10075-HF	76601-005300

Low Flow



High Flow



Low Flow Selection Guide

Dripperline Flow Rate	Spacing	Min. Length per Zone	Max. Length per Zone	Max. Length of Longest Lateral
Techline CV @ 42 psi				
0.26 GPH	12"	59'	1,005'	618'
	18"	88'	1,057'	877'
0.4 GPH	12"	38'	653'	469'
	18"	57'	980'	732'
0.6 GPH	12"	26'	435'	369'
	18"	38'	653'	574'
	24"	51'	871'	725'
0.9 GPH	12"	17'	290'	280'
	18"	26'	435'	439'
	24"	34'	580'	555'
Techline and Techline RW @ 42 psi				
0.4 GPH	12"	38'	653'	520'
	18"	57'	980'	732'
0.6 GPH	12"	26'	435'	407'
	18"	38'	653'	574'
	24"	51'	871'	725'
0.9 GPH	12"	17'	290'	311'
	18"	26'	435'	439'
	24"	34'	580'	555'

High Flow Selection Guide

Dripperline Flow Rate	Spacing	Min. Length per Zone	Max. Length per Zone	Max. Length of Longest Lateral
Techline CV @ 45 psi				
0.26 GPH	12"	1,049'	3,883'	618'
	18"	1,574'	5,825'	877'
0.4 GPH	12"	682'	2,524'	469'
	18"	1,023'	3,786'	732'
0.6 GPH	12"	455'	1,683'	369'
	18"	682'	2,524'	574'
	24"	910'	3,366'	725'
0.9 GPH	12"	304'	1,122'	280'
	18"	455'	1,683'	439'
	24"	607'	2,244'	555'
Techline and Techline RW @ 45 psi				
0.4 GPH	12"	682'	2,524'	520'
	18"	1,023'	3,786'	732'
0.6 GPH	12"	455'	1,683'	407'
	18"	682'	2,524'	574'
	24"	910'	3,366'	725'
0.9 GPH	12"	304'	1,122'	311'
	18"	455'	1,683'	439'
	24"	607'	2,244'	555'